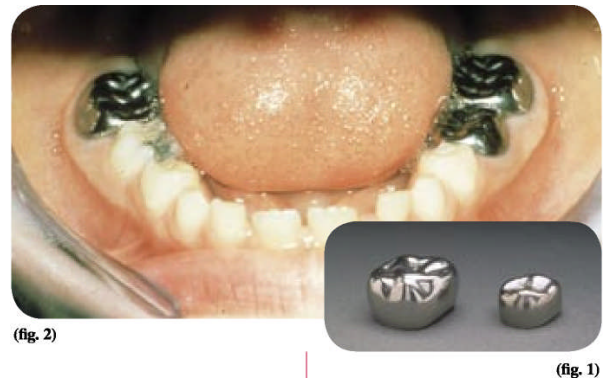


STAINLESS STEEL CROWNS



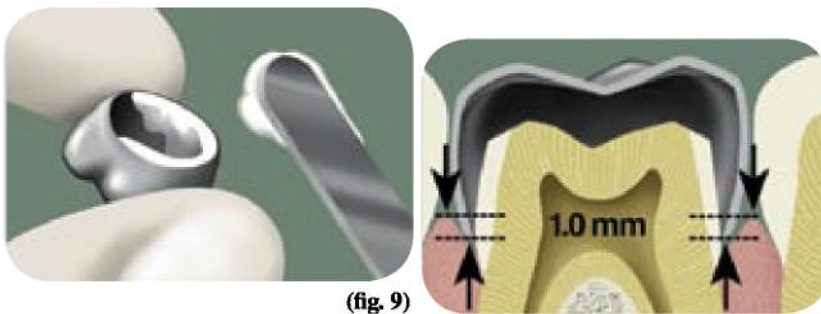
Sometimes due to extensive decay of teeth and large cavities a stainless steel crown is needed to restore form and function, to a tooth. Additionally retaining the primary tooth allows for the patient to be able to chew and function on the tooth and it also acts as a natural space maintainer until the permanent tooth is ready to erupt.

Procedure:

- All decay is removed from tooth.
- The chewing surface of the tooth is reduced and contacts with adjacent teeth are broken to allow for the crown to fit on top of the tooth.



- Different sizes are tried to ensure the selection of a tight fitting crown.
- The crown is filled with cement and placed on the tooth.



Excess is cement is cleaned off. Post –operative instruction are then given.